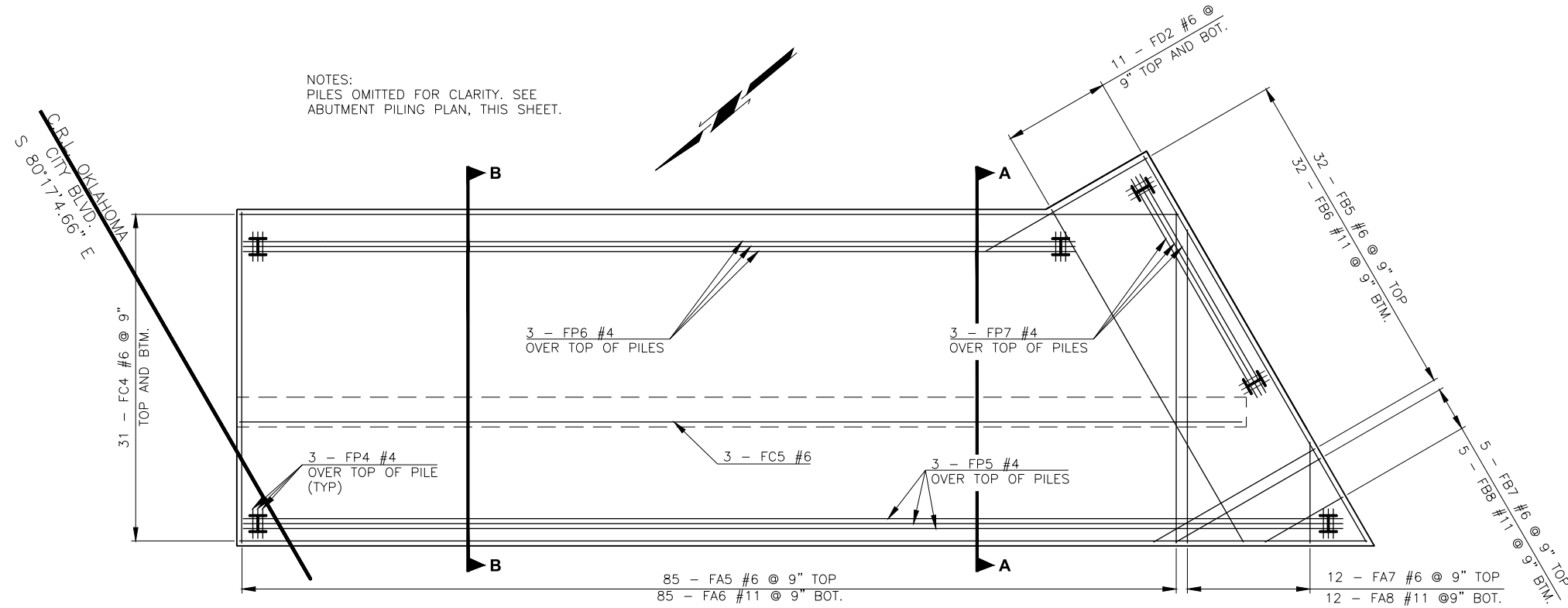
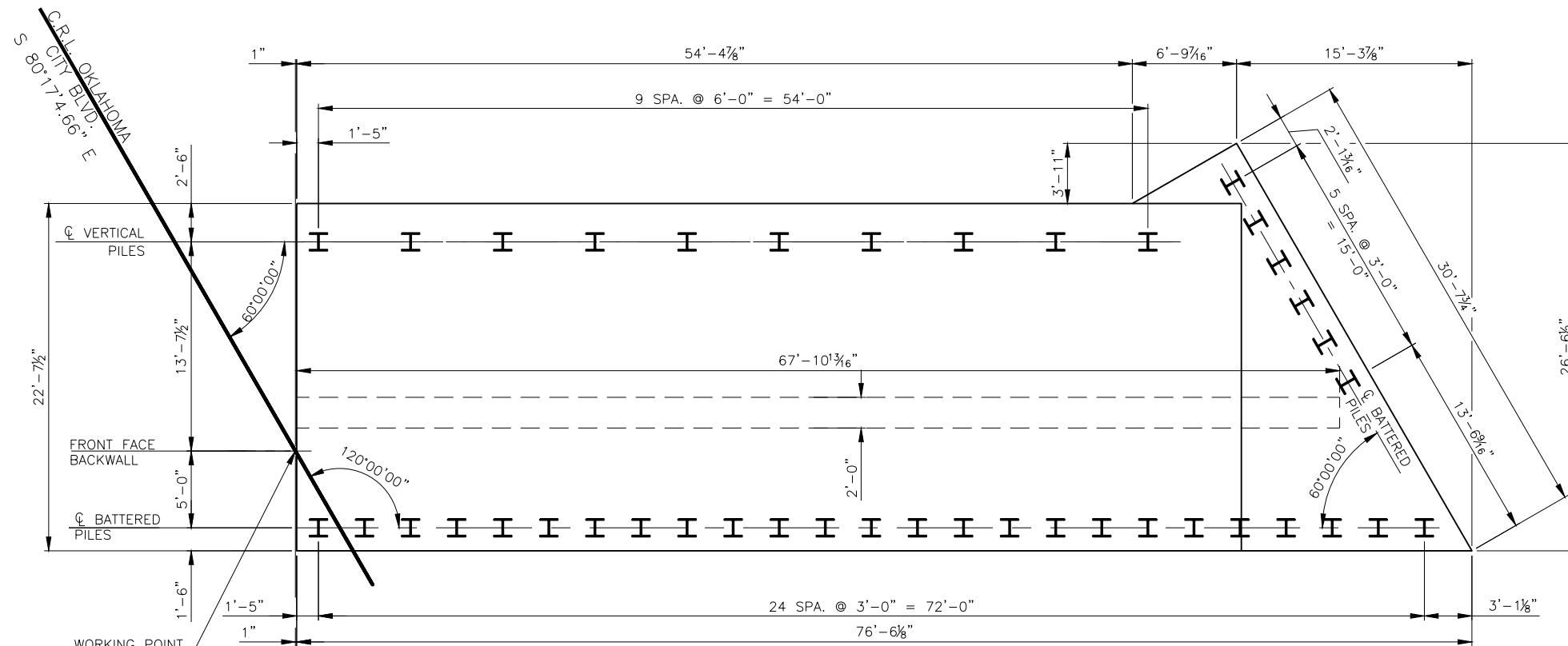


DESCRIPTION	REVISIONS	DATE

NOTES:
PILES OMITTED FOR CLARITY. SEE
ABUTMENT PILING PLAN, THIS SHEET.



ABUTMENT FOOTING REINFORCING PLAN



ABUTMENT PILING PLAN

NOTES:
ALL PILE ARE HP 14X89.

ADJUST REINFORCING SPACING TO
CLEAR PILES.

FOR SECTIONS A-A, AND B-B, SEE
SHEET 90.

NOTE:
FOR ADDITIONAL WALL AND WING
REINFORCEMENT CAST INTO FOOTING,
SEE SHEETS 89-91.

ABUTMENT NO. 2 QUANTITIES

ITEM	UNIT	TOTAL
SUBSTRUCTURE EXCAVATION COMMON	C.Y.	570
GRANULAR BACKFILL	C.Y.	1,490
CLSM BACKFILL	C.Y.	745
CLASS A CONCRETE	C.Y.	688.0
EPOXY COATED REINFORCING STEEL	LB.	65,980
PILES, FURNISHED (HP 14X89)	L.F.	1,622
PILES, DRIVEN (HP 14X89)	L.F.	1,622
WATER REPELLENT (VISUALLY INSPECTED)	S.Y.	336
6" PERFORATED PIPE UNDERDRAIN ROUND	L.F.	82

WORKING POINT
(FRONT FACE
BACKWALL)
STA. 163+41.04

DESIGN	T.A.C.	OKLAHOMA CITY BLVD.	OKLAHOMA COUNTY
DRAWN	R.A.P.	OVER CLASSEN BLVD.	BRIDGE A
CHECKED	T.A.C.	ABUTMENT NO. 2 - FOOTING DETAILS	
APPROV.	T.A.C.		
SQUAD	CEC		
		JOB PIECE NO. 17428(88)	SHEET NO. 88